

A map of Davis County, Utah, showing various trails. The map is framed by a thick black L-shaped border on the left and bottom. A large black rectangle with white text is centered over the map. The text reads "DAVIS COUNTY TRAILS". The map shows a network of trails in various colors: green, yellow, orange, red, and purple. Some trails are solid lines, while others are dashed. The map also shows roads, including Highway 12 and Highway 11, and landmarks like Elephant Rock and Eggert Park. The text "TO GREAT WESTERN TRAIL" is visible on the map.

DAVIS COUNTY TRAILS



Project Description

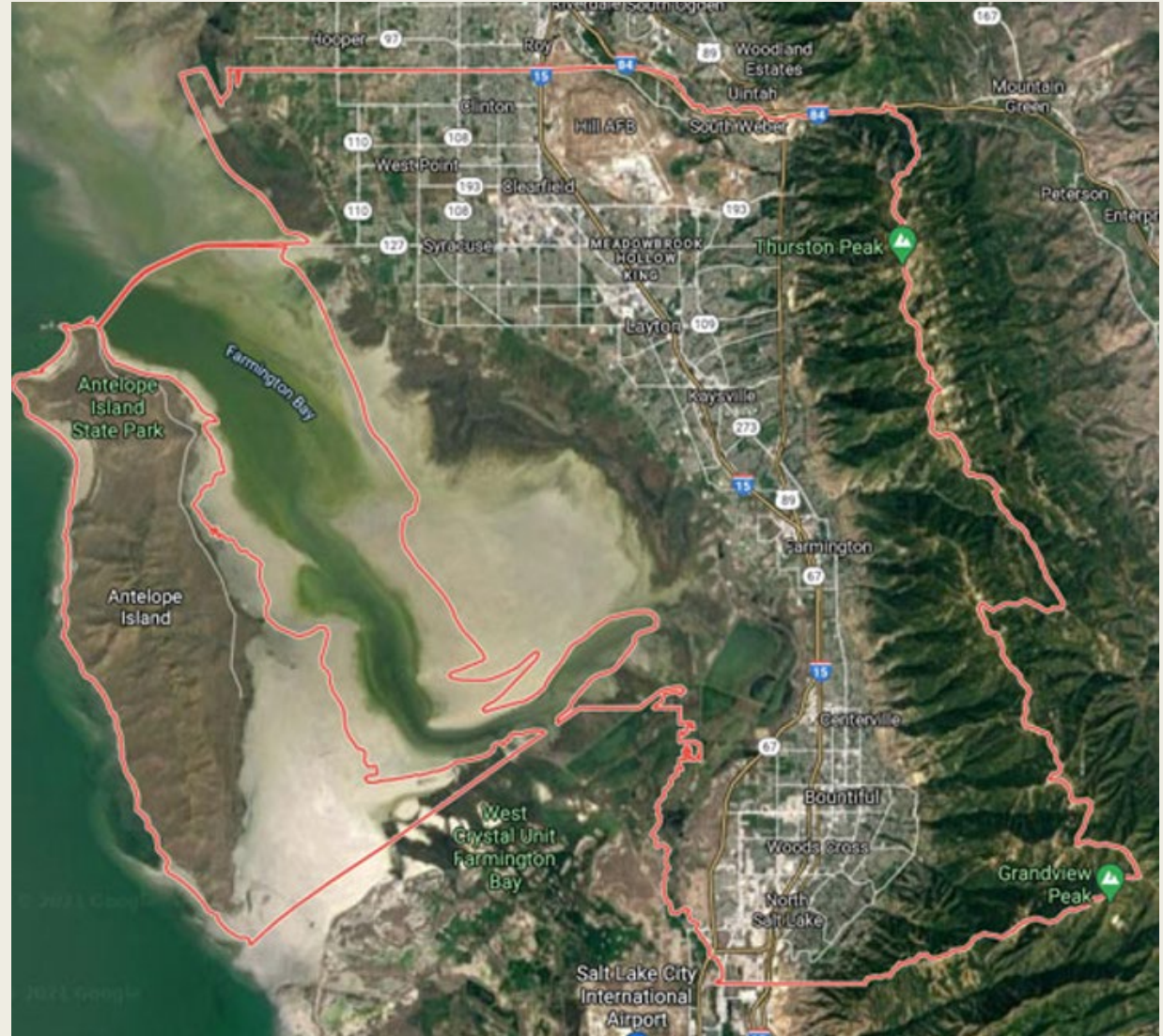
- \$5 Million one-time appropriation to Office of Outdoor Recreation for trails in Davis County
 - *Distributed via grant applications to political subdivisions in Davis County*
 - *Used for land acquisition, trailhead facilities, and trail development*



What is the vision and where are the gaps?

Turn a series of separate trails into a Countywide network

- Gaps to fill:
 - *Property acquisition*
 - *Trailhead facilities*
 - *Trail improvements*
 - *Federal design standards*



What is the demonstrated need?

- Increasing growth in outdoor recreation
 - *Bike sales (national) up 121% in 2020*
 - *10 M new Utah outdoor participants since 2018*
- Stress on existing facilities and user groups
 - *i.e. high school mountain bike teams*
 - *i.e. equestrian access and availability*



What are the benefits?

- Economic growth (Davis County)
 - *Leisure and hospitality sales in Davis County contributed \$583,455,665*
 - *55% of every \$1 spent on recreation stays in the local economy*
 - *Antelope Island: 54.2% increase in visitorship, the 3rd most visited State Park in 2020*
- Property values
 - *Alpine City and Development example*
- Preservation of and access to a valuable natural, public resource
- Resident and visitor wellbeing
 - *Utah State University Wellbeing Project findings*

Davis County is primed for trail expansion

- 500 miles of current trail inventory throughout the County
- 13 of 15 Davis County cities have trail master plans
 - *10 of 15 have dedicated revenue sources that could be used for trails through RAP taxes, bond proceeds, or earmarked funds.*
- Davis County is proposing to complete 55 miles of the Bonneville Shoreline Trail
 - *27 miles on Forest Service land*
 - *18 miles will need to be built on private property, municipal, or other non-federal land.*

A group of approximately 12 hikers are posing for a photo on a rocky trail next to a large, multi-tiered waterfall. The hikers are dressed in outdoor gear, including hats, jackets, and backpacks. Some are standing, while others are crouching or kneeling. A small dog is visible in the front row. The background features a powerful waterfall cascading over dark rocks, with a steep, rocky cliff face to the right. The overall scene is outdoors and appears to be a popular hiking spot.

QUESTIONS?